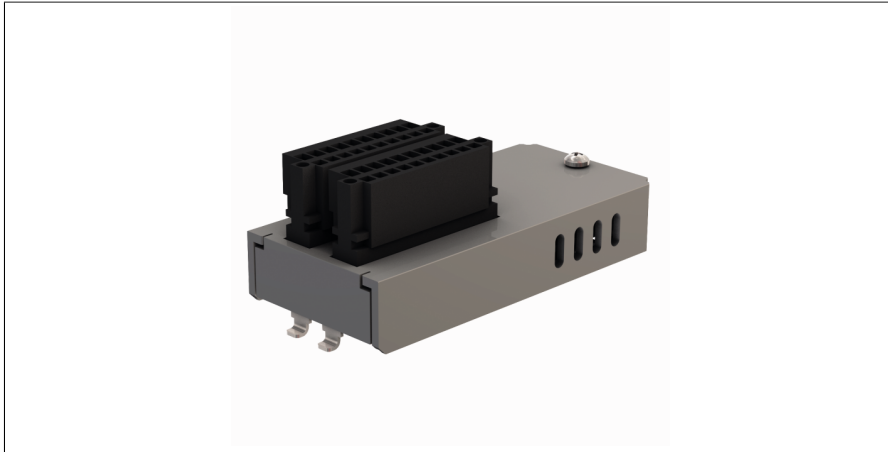


# TX HMI/PLC Series

## Plug-In Module

### 8 DI, 6 DO, 1 Relay Output

#### TX-IO-DX06



- Plug-in expansion module for use with HMIs of the TX500 and TX700 product series
- I/O Modules
- 8 digital inputs, 24 VDC, PNP
- 6 digital outputs, 24 VDC, 0.5 A, PNP
- 1 relay, NO contact

Type	TX-IO-DX06
ID	6828203

Supply	
Supply voltage	24 VDC
Admissible range	12...30 VDC
System power supply	From the HMI
Voltage supply connection	Pluggable strip with cage clamp terminals
Electrical isolation	optical, 1500 V <sub>rms</sub>

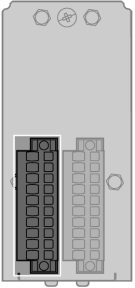
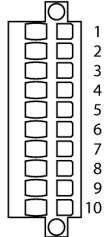
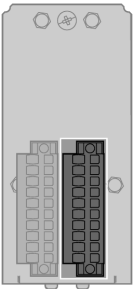
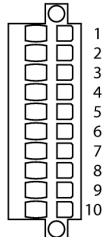
Digital inputs	
Number of channels	8
Connectivity inputs	1 pluggable strip with spring-type terminals 10-pin, 3.5-mm pattern (Weidmueller — Omnimate BLZF 3.5/180F)
Input type	PNP
Low-level signal voltage	< 6 V
High level signal voltage	> 12 V
Low level signal current	< 1 mA
High level signal current	> 3 mA
Input delay	< 0.05 ms
Sensor supply	24 VDC
Electrical isolation	1500 V <sub>rms</sub>

Digital outputs	
Number of channels	6 DO + 1 Relay
Connectivity outputs	1 pluggable strip with spring-type terminals 10-pin, 3.5-mm pattern (Weidmueller — Omnimate BLZF 3.5/180F)
Output type	PNP and relays
Output voltage	24 VDC
Output current per channel	0.5 A
Simultaneity factor	0.46
Output delay	0.15 ms
Short-circuit protection	yes
Actuator power supply	24 VDC externally fed
Electrical isolation	1500 V <sub>ms</sub>

Standard/Directive conformity	
Approvals and certificates	CE, cULus, DNV GL

General Information	
Dimensions (W x L x H)	41.2 x 89.3 x 33.7 mm
Ambient temperature	0...+50 °C
Storage temperature	-20...+70 °C
Relative humidity	5...85 %, non-condensing
Protection class	IP20
Housing material	Metal
Housing color	Silver
Mounting	On HMIs of the TX500 and TX700 series

## Connection and pin assignment

	<p><b>Digital Outputs and Relays</b></p>	<p><b>Pin Assignment CN1</b></p>  <table border="0"> <tr><td>1</td><td>1 = + 24VDC in</td></tr> <tr><td>2</td><td>2 = Relais</td></tr> <tr><td>3</td><td>3 = Relais</td></tr> <tr><td>4</td><td>4 = Out 1</td></tr> <tr><td>5</td><td>5 = Out 2</td></tr> <tr><td>6</td><td>6 = Out 3</td></tr> <tr><td>7</td><td>7 = Out 4</td></tr> <tr><td>8</td><td>8 = Out 5</td></tr> <tr><td>9</td><td>9 = Out 6</td></tr> <tr><td>10</td><td>10 = GND in</td></tr> </table>	1	1 = + 24VDC in	2	2 = Relais	3	3 = Relais	4	4 = Out 1	5	5 = Out 2	6	6 = Out 3	7	7 = Out 4	8	8 = Out 5	9	9 = Out 6	10	10 = GND in
1	1 = + 24VDC in																					
2	2 = Relais																					
3	3 = Relais																					
4	4 = Out 1																					
5	5 = Out 2																					
6	6 = Out 3																					
7	7 = Out 4																					
8	8 = Out 5																					
9	9 = Out 6																					
10	10 = GND in																					
	<p><b>Digital Inputs</b></p>	<p><b>Pin Assignment CN2</b></p>  <table border="0"> <tr><td>1</td><td>1 = + 24VDC in</td></tr> <tr><td>2</td><td>2 = In 1</td></tr> <tr><td>3</td><td>3 = In 2</td></tr> <tr><td>4</td><td>4 = In 3</td></tr> <tr><td>5</td><td>5 = In 4</td></tr> <tr><td>6</td><td>6 = In 5</td></tr> <tr><td>7</td><td>7 = In 6</td></tr> <tr><td>8</td><td>8 = In 7</td></tr> <tr><td>9</td><td>9 = In 8</td></tr> <tr><td>10</td><td>10 = GND in</td></tr> </table>	1	1 = + 24VDC in	2	2 = In 1	3	3 = In 2	4	4 = In 3	5	5 = In 4	6	6 = In 5	7	7 = In 6	8	8 = In 7	9	9 = In 8	10	10 = GND in
1	1 = + 24VDC in																					
2	2 = In 1																					
3	3 = In 2																					
4	4 = In 3																					
5	5 = In 4																					
6	6 = In 5																					
7	7 = In 6																					
8	8 = In 7																					
9	9 = In 8																					
10	10 = GND in																					