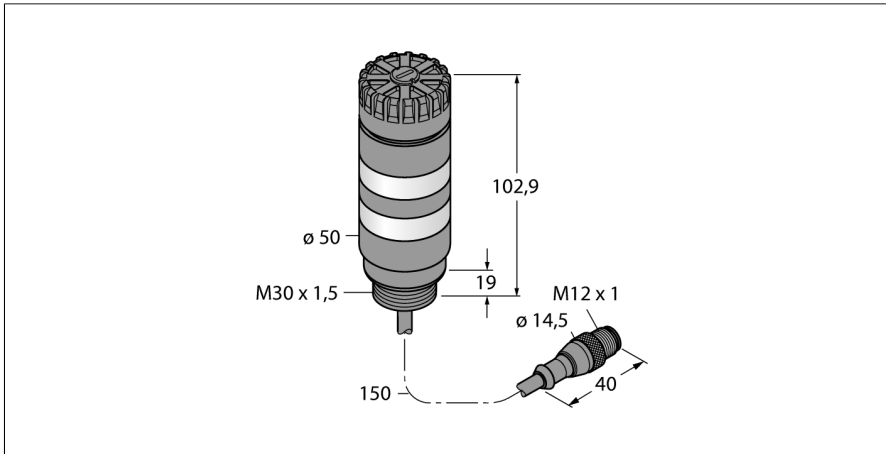
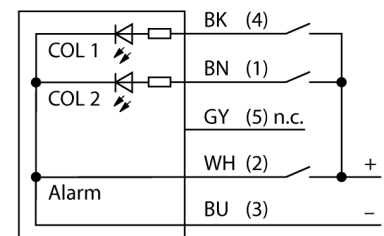


LED Signal Light Tower Light TL50BLRY2AQP



- Plastic housing, black
- Protection class IP50
- EMI and RFI immune
- Multicolor: Red (COL 1) / Yellow flashing (COL 2)
- Operating voltage: 12...30 VDC or 24 VAC with 45 mA per LED color
- Inputs: PNP/NPN
- Beeper max. 92 dB

Wiring Diagram



Functional principle

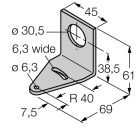
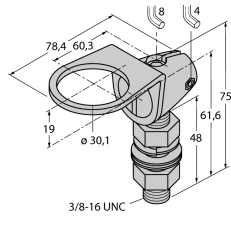
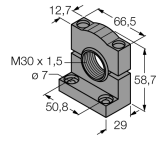
The rugged multifunction TL50 beacon is available in many variations and is easily mounted. Each signal tower can be assembled from a maximum of four varicolored LEDs, with or without a beeper. You can also choose from three different lighting functions (steady, rotating, flashing). The lighting function is indicated in the type code after the color (no number: steady; 1: rotating; 2: flashing). Clearly visible status displays for indoor and outdoor applications.

The wiring diagram shows a PNP pin assignment.

5 colors are available, blue (B), green (G), red (R), yellow (Y) and white (W), which specify the light sequence from bottom to top in the type designation of the tower light. Example: TL50GYRQ, designates the colors green, yellow and red from bottom to top.

Type	TL50BLRY2AQP
ID	3088578
Signal and display data	
Purpose	LED indicator light
Function	Tower light
Light type	Red Yellow, flashing
Dimmable	No
Features of color 1	Red, Permanently on, 24 lm
Features of color 2	Yellow, Flashing, 15 lm
Acoustic signal	Continuous tone, 92dB
Electrical data	
Operating voltage U_o	12...30 VDC
DC rated operating current I_o	≤ 125 mA
Operating voltage U_a	21...27VAC
AC rated operational current	≤ 100 mA
Max. current consumption per color	125 mA
Max. current consumption of beeper	45 mA
Input type	Bipolar (PNP/NPN)
Response time typical	< 1 ms
Mechanical data	
Cascadable	No
Design	Smooth barrel, TL50BL
Dimensions	Ø 50 x 121.9 mm
Housing material	Plastic, ABS, Black
Window material	Polycarbonate, clear
Electrical connection	Cable with connector, M12 × 1, 0.15 m, PVC
Number of cores	4
Ambient temperature	-20...+50 °C
Relative humidity	0...95%
Protection class	IP50
Tests/approvals	
Approvals	CE, UL listed

Accessories

Type code	Ident no.		Dimension drawing
SMB30A	3032723	Mounting bracket, rectangular, stainless steel, for sensors with 30mm thread	 <p>Technical drawing of a rectangular stainless steel mounting bracket. Dimensions include: top width 45, hole diameter $\phi 30.5$, hole offset 6.3, hole diameter $\phi 6.3$, hole offset 38.5, hole diameter 6.1, bottom width 69, bottom offset 7.5, and a radius of R 40.</p>
SMB30FA	3074005	Montagewinkel; Werkstoff VA 1.4401	 <p>Technical drawing of a mounting angle. Dimensions include: top width 78.4, hole diameter $\phi 30.1$, hole offset 19, hole diameter 1, hole offset 60.3, hole diameter 8, hole offset 4, total height 75, mounting height 61.6, and mounting offset 48. The thread is specified as 3/8-16 UNC.</p>
SMB30SC	3052521	Mounting bracket, PBT black, for sensors with 30 mm thread, rotatable	 <p>Technical drawing of a rotatable mounting bracket. Dimensions include: top width 12.7, hole diameter $\phi 7$, hole offset 66.5, hole diameter 58.7, hole offset 50.8, and hole diameter 29. The thread is specified as M30 x 1.5.</p>